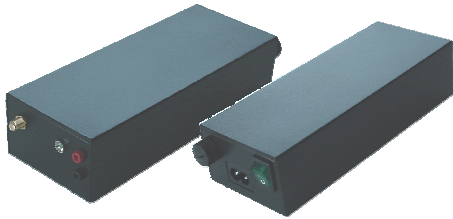


# DC Injector BTS30



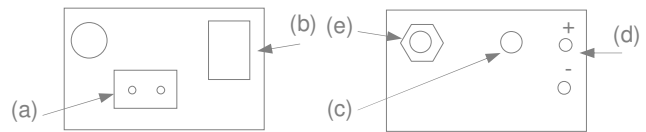
## Key features

The BTS30 DC injector is a 20W switching power supply designed to supply a 30Vdc external generic Radio Frequency device. The input voltage line is 180-260Vac at 50Hz.

The output DC voltage is available on standard SMA connector.

The BTS30 is equipped with LED indicator for normal operation as well as DC output voltage test points

The output is protected against short circuit with a 0,6Ampere current limiter circuit.



## User's Guide

- 1) Connect the SMA output connector to RF device to be supplied (e).
- 2) Connect a generic DC VOLTMETER on the monitor test points (d) to verify the output voltage value.
- 3) Insert the power cord (a) and turn ON the device(b)
- 4) Verify the green LED on the front panel light (c)

**If the front panel LED is flashing  
remove power and verify any  
possible short circuit presence  
on the external load**

## Technical Characteristics

### ELECTRICAL

Input Voltage : 180-260 Vac @ 50Hz

Output

Voltage : 30Vdc +/- 5%

Current : 0,6 Ampere

Efficiency : > 85%

EMI compliances

standard FCC cl. B, CISPR 22 cl. B

EN55022 cl. B, VDE 0878 PT3 cl. B

Working Temperature range 0°C to +50°C

### PROTECTIONS

Input : 630mA/250V fuse

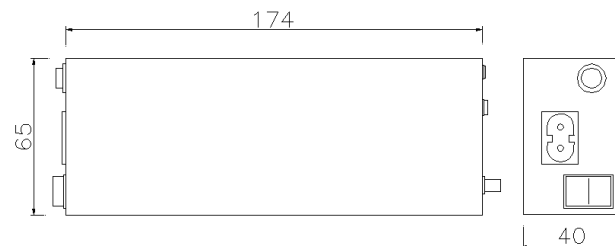
Output : 0,6° current limiter

### CONTROLS

Output voltage presence

Test points

## Mechanical Layout (Unit: mm)



Dimensions : 65 x 174 x 40 (h)

Weight : 180 grams

Enclosure : ABS – IP20 /F

Color : black

### CONNECTIONS

Input : 2 poles socket TYPE112(CEE III)

Output : SMA Fe (positive central)



AREA S.r.l.

Via Lago di Lesi 27 – 00010 VILLA ADRIANA ROME (ITALY)

Tel. / Fax +39.774.324589 e-mail: info@area-trade.it

www. area-trade.it